



### – About POWDER RIVER ENERGY CORPORATION –

Our purpose is to positively influence and improve the lives for those we serve by providing reliable energy and services while paving the way for access and affordability.

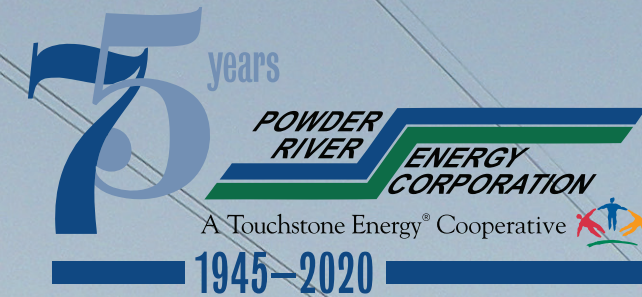
We strive to be pioneers of excellence in the Cooperative Network while delivering extraordinary value to our members, embracing a visionary outlook, leveraging accelerating technologies, empowering our team and engaging our membership.

We are focused on Safety, Integrity, Innovation, Accountability and Commitment to Community.



<https://precorp.coop/crook-county-69kv-line>  
(833) 4-NEWLINE (833-463-9546)

Powder River Energy Corporation is an equal opportunity provider and employer.



Powder River Energy Corporation (PRECorp) strives to serve all of its members in providing safe and reliable electric service, and to make the needs of our members a priority. It is our practice to work with the public any time we plan to build a new line that is 69 kilovolts (kV) or more. In addition to a public meeting, conversations with community members, and collaborative efforts to work with local landowners, PRECorp shares information and project updates on our website: <https://precorp.coop/crook-county-69kv-line>.

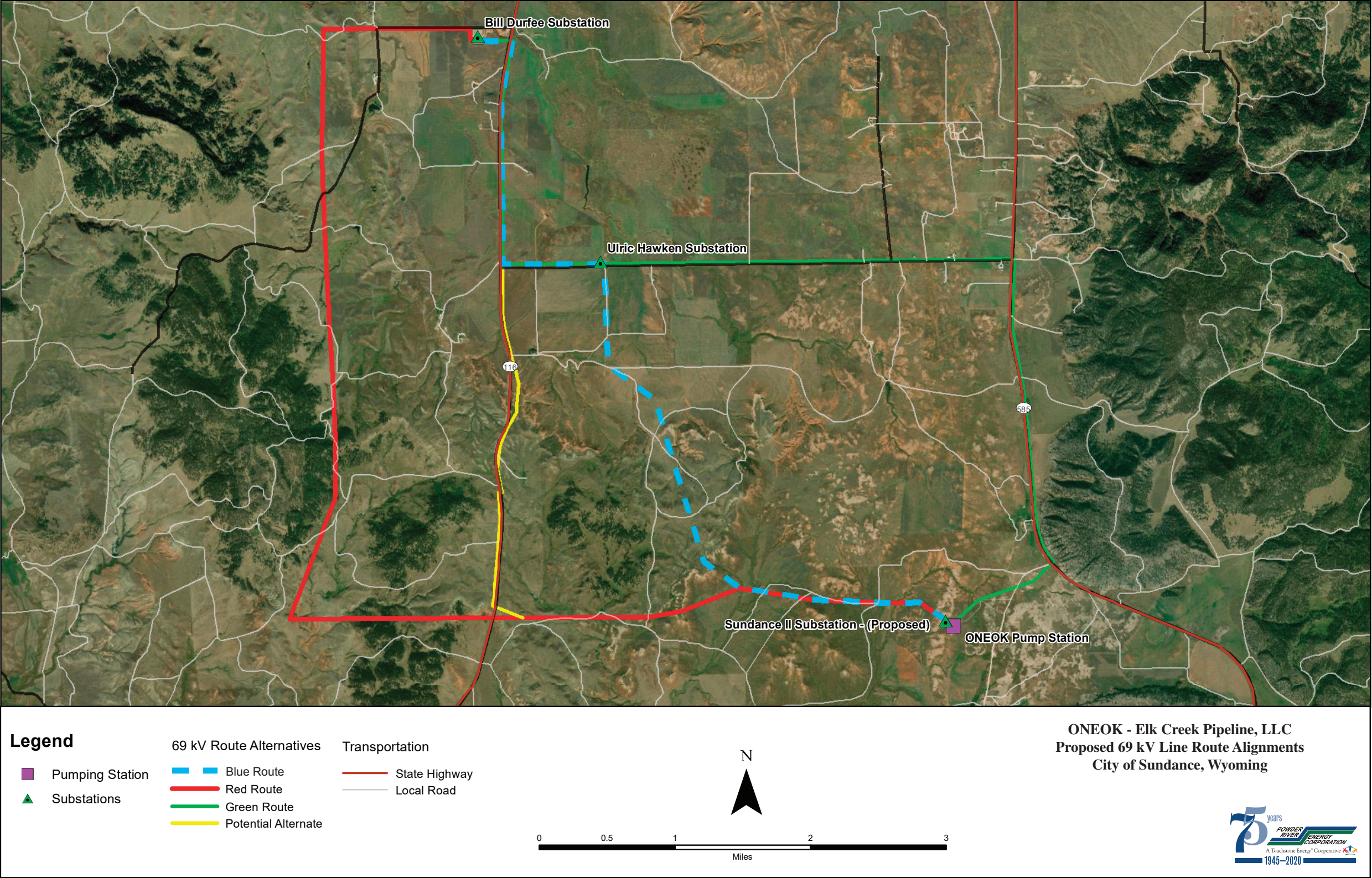


### – Project Purpose & Need –

PRECorp needs to build a new 69 kV distribution line in Crook County to serve new load for the Elk Creek Pipeline, owned by PRECorp member, ONEOK. The line will originate from the Bill Durfee Substation and terminate near a new ONEOK Sundance II Pump Station (adjacent to the existing Sundance pump station).

This new line is necessary to accommodate this new electric load and to meet rising electricity demand in the region. It will serve to strengthen our grid and provide further reliability to our customers in Crook County.





### Project Route Options

A feasibility study has been done to review four possible routes:

- **Blue Route:** Approx. 7 miles, this route originates from a new 69 kV line position at the Bill Durfee Substation. It exits the substation to the west and is then routed to the east toward Highway 116, where it turns south and runs south to Banks Road, then east towards the Ulric Hawken Substation where it turns south and runs southeast toward the ONEOK Sundance Pump Station.
- **Green Route:** Approx. 8.8 miles, this route originates from a new 69 kV line position at the Bill Durfee Substation. Similar to the Blue Route it exits the substation to the west and is then routed to the east toward Highway 116 and runs south to Banks Road, where it turns east toward the Ulric Hawken Substation. It follows the 24.94 kV distribution line route to the ONEOK Sundance Pump Station.
- **Red Route:** Approx. 10.6 miles, this originates from a new 69 kV line position at the Bill Durfee Substation. It exits the substation to the west to parallel the existing Osage-Sundance 69kV line. Approx. 1.1 miles west of the substation, the line turns south, following the existing 69 kV line for approx. 4.4 miles, then turns east toward the ONEOK Sundance Pump Station.
- **Yellow Route:** Approx. 2.8 miles, this is not a complete end-to-end route. It runs along Highway 116 and is recommended as an alternate to portions of the Blue and Green routes.